



# 24 CC

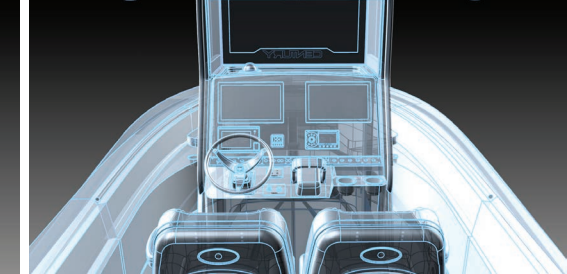
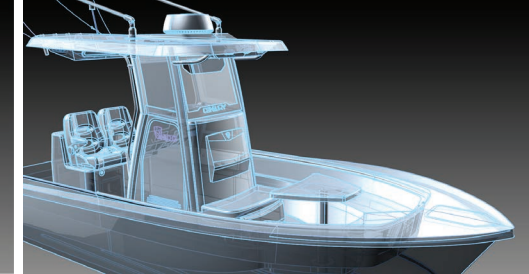
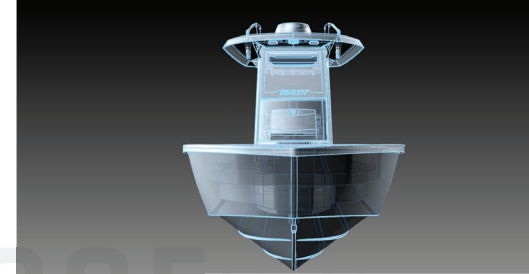


SPLASH FINAL PROOF





SPLASH FINAL PROOF



*We are designing the next generation of boats to meet the demands of 21st-century boating and utilizing the latest technology, manufacturing processes, and materials*



## HIGH-QUALITY BOATS FOR ANGLERS AND FAMILIES

### INNOVATION

LEADING THE INDUSTRY SINCE 1926

We relentlessly test our products and design new solutions for features that provide our customers with state-of-the-art advances.

### LUXURY

BLEND OF CLASS AND STYLE

Passion for perfection. It's why Century Boats brings meticulous attention to detail and an obsession for style and innovation to every boat we build.

### RELIABILITY

DEPENDABLE COMPONENTS BUILT TO LAST

Solid platforms built to get you there and back in safety and comfort. 100% composite construction from bow to stern with a 10 year warranty plan on the hull and deck structure.

### FISHABILITY

PERFORMANCE FISHING FEATURES

We know what you need to perform at your best when you're out there on the water. Century Boats includes every fishing feature to get your next big catch.

The Century 24 Center Console is the next generation in family fishing boats focused on comfort, ergonomics, and on the water fishing features.



# 24 CC

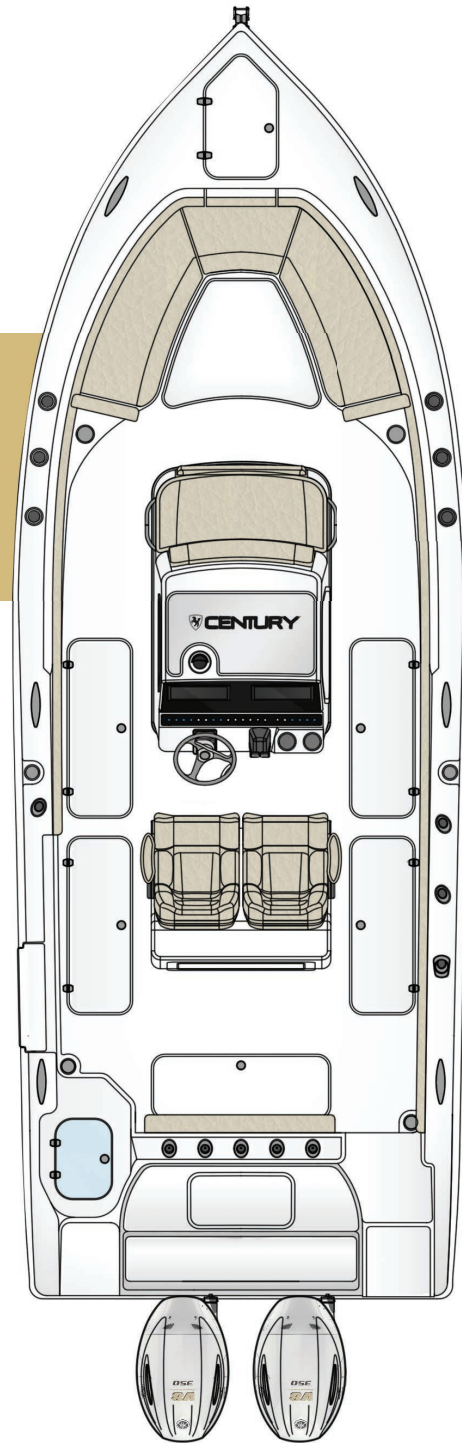
## KEY FEATURES

- Advanced hull geometry for a smooth, stable, and dry ride
- Oversized cockpit for increased comfort and fishability
- Four in-floor insulated fish boxes with diaphragm pumps
- Hydraulic table - full height or recessed into the deck
- Convertible console seating to create a forward sun pad
- Integrated enclosed windscreen for driver protection
- Dive door with integrated telescopic re-boarding ladder

## BASE PRICE

Single Yamaha 300 F300UCA

\$144,177



## SPECIFICATIONS

LENGTH	23'-9"
BEAM	8'-6"
DRAFT	15"
DEADRISE	20°
BRIDGE CLEARANCE	8'-5"
WEIGHT (1/2 LOAD)	7,500 LBS
WEIGHT (NO ENGINE)	4,500 LBS
FUEL CAPACITY	162
FRESHWATER CAPACITY	13 gal
SEATING CAPACITY	10
STANDARD POWER	Single 300HP Outboard
OPTIONAL POWER	Twin 150HP Outboards
OPTIONAL POWER	Twin 200HP Outboards

## STANDARD

### POWER & ENGINE

Single Yamaha 300 F300UCA

### MECHANICAL / ELECTRICAL / PLUMBING

Battery Charger 4 Bank w/ Inlet (twin engine)  
Battery management system w/ VSR (Panel & Trays)  
BocaTech Switch Board  
Freshwater Transom Shower  
Lighting/LED; Cockpit Courtesy Lights, blue (x6)  
Lighting/LED; Overhead Tri-Color Light  
Raw Water Washdown  
Yamaha 6YC Gauge

### HARDWARE

Bow Rails; recessed, full bow coverage  
Cleats; pull up (x6)  
Coaming Pads; 360°  
Compass; Ritchie  
Compression Latches  
Cupholders (x9)  
Dive Door  
Dive Ladder; Removable, from Dive Door  
Fire Extinguisher Box  
Friction Hinges; all hatches  
Integrated Windshield w/ Powder Coated Frame  
Steering; Tilt Helm  
Stereo, WetSounds MC-2, (4) 6.5 Revo Speakers, and Amp  
Transom ladder; 4 rung, telescoping  
Trim Tabs w/ Indicator  
Windlass; SS anchor, 150ft rope, 15ft chain

### FISHING

Baitwell - Aerated w/ PowerStream Venturi Aerator  
Leaning Post Tackle Center  
Rod Holder (15°) (x5)  
Rod Holder (30°) (x2)  
Rod/Cup holder Units (x2)  
Rodbox storage (x1)

### HARDTOP

Top-Powder Coat, FRP Hard Top w/ Lights, & Rod Holders  
Windshield Air Vent (Electric)

### SEATING

Bow Seating Backrest (P+S, removable)  
Bow Seating; 3-Piece Cushion, Removable  
Console Seat; Backrest & cushion  
Console Seat; Flip-up Footrest  
Leaning Post Seat; Deluxe Captain Helm w/ Flip Up Bolster  
Rear Hideaway Seat

### COLOR

Hull Color White - CCP Armor HP Advanced Gel Coat

### UPHOLSTERY

Sileather

### ACCESSORIES & OTHER

Shipping Cover or Shrinkwrap

## OPTIONS

### POWER & ENGINE

Single Yamaha F300NCA2  
Twin Yamaha F150XCA  
Twin Yamaha F200XCA

### ELECTRICAL

Lumitec LED SeaBlaze X2 (2 lights) White and Blue  
Lumitec LED SeaBlaze X2 (2 lights) RGBW Color Spectrum  
Lumitec POCO - Digital Lighting Control  
Spotlight LED  
Garmin GPSMAP 8612xsv - Touch, Chartplotter & Sonar Combo,  
600kw Thru-Hull Transducer, VHF115  
Additional Screen Garmin GPSMAP 8612xsv - Touch, Chartplotter  
& Sonar Combo  
Garmin GPSMAP 8616xsv Touch, Chartplotter & Sonar Combo,  
600kw Thru-Hull Transducer, VHF115  
Transducer upgrade - B175HW  
Garmin GMR Phantom™ 24 24" Dome 40watt Solid State Radar w/  
Motionscope

### STEERING

Steering; Edson Wheel w/ Knob  
Yamaha DES Steering  
Yamaha Autopilot  
Yamaha Full Maneuverability (Joystick & Autopilot)

### OUTRIGGER

TACO Grand Slam 280  
TACO Grand Slam 390

### SEA DECK

Footrest  
Complete Boat

### STEREO

Wet Sounds: Marine Media Center (6) Revo 6", (1) Revo 10" Sub,  
SYN-DX 6 amp  
Wet Sounds: Marine Media Center (4) Revo 6", (2) Revo 8", (1) Revo  
12" Sub, SDX6 amp

### CANVAS

Forward Shade w/ Carbon Fiber Poles  
Console & Lean Post Cover

### RODHOLDER

Rodholder/Cupholder Combo

### COLOR

Side Stripe  
Full Hull  
Custom Hull Color  
Top Color  
Custom Paint

### UPHOLSTERY

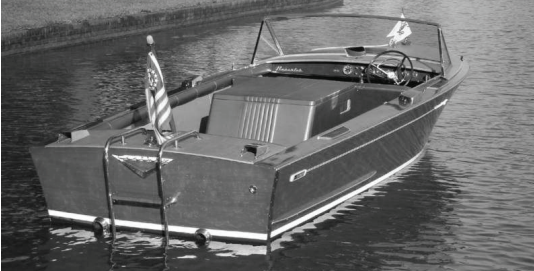
Custom Stitch: Bentley, Fish Scale, Custom  
Upholstery Color: Nantucket, Sterling, Custom

### ACCESSORIES & OTHER

Mat - Custom Anti-Fatigue Mitigator Mat w/ Century Debossed Logo  
Bow Sunpad Filler Cushion; stows below stbd gunwale  
Head - Electric, Mac. and Holding Tank  
Fish Boxes - Add 2 Diaphragm Pumps  
Bow Table; Electronic, 3 Position

DEMAND IT ALL™





The entire team at Century prides itself on being made in the USA and upholding the finest traditions of American boat building

SPLASH FINAL PROOF

# BUILDING DREAM BOATS SINCE 1926



## FOUNDING

### THE WELCH BROTHERS

Century Boat Company was founded in 1926 at 333 Blecher Street in Milwaukee, WI by two brothers James and William Welch who had a knack for building wooden plank hulls that were designed for speed. In 1928, the company moved to Manistee, Michigan where it stayed for more than 60 years.

## HISTORY

### DESIGNED FOR SPEED

Century Hurricane (illustration above) held the world's outboard speed record of 50.93 miles per hour. By 1937, Century offered 28 models. In the early 1960s, Century Boats introduced its first jet-powered boat. In the late 1960s, Century began creating fiberglass hulls. In 1983 the Panama City, Fla. plant opened and introduced two new models, the Century Tournament Skier and Miramar.

## TODAY

### MODELS FOR EVERY FAMILY

Today, Century Boats designs and builds family and fishing boats from 21-feet to 34-feet and includes Center Consoles, Dual Consoles, Express, and Walk Around models. Coronado is a luxury day-boat line which includes Center Console, Runabouts, Dual Consoles, and cuddy models.